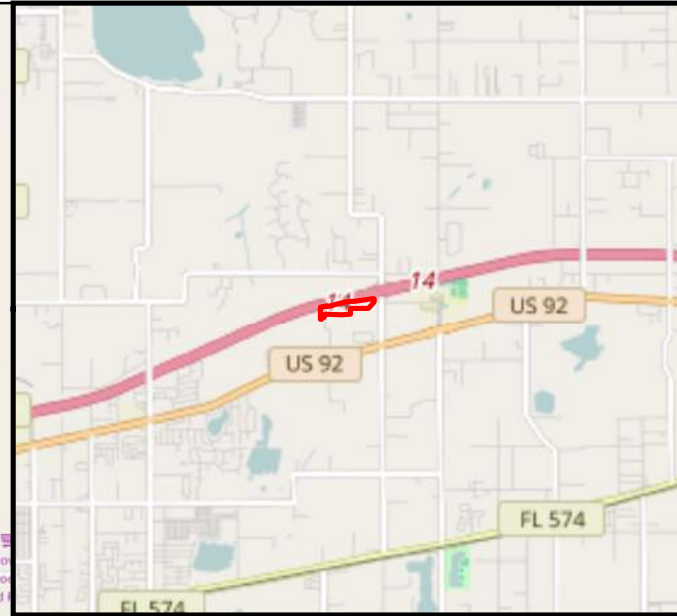
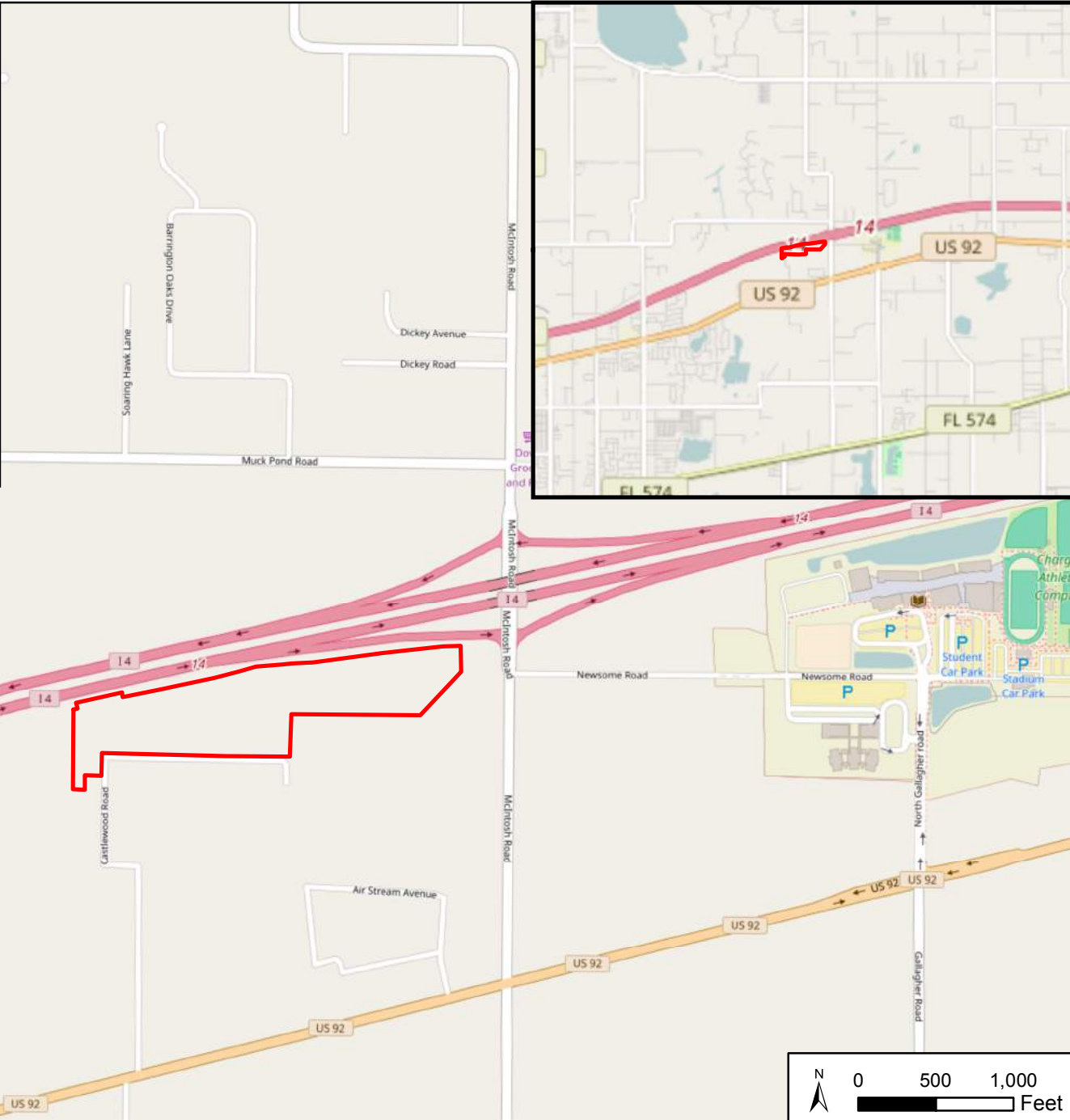
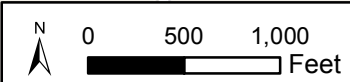




Hillsborough County



K:\BCD_ENV\149383007-Tampa RV\GIS\MXD\TampaRV_Location_Map.mxd



Kimley»Horn

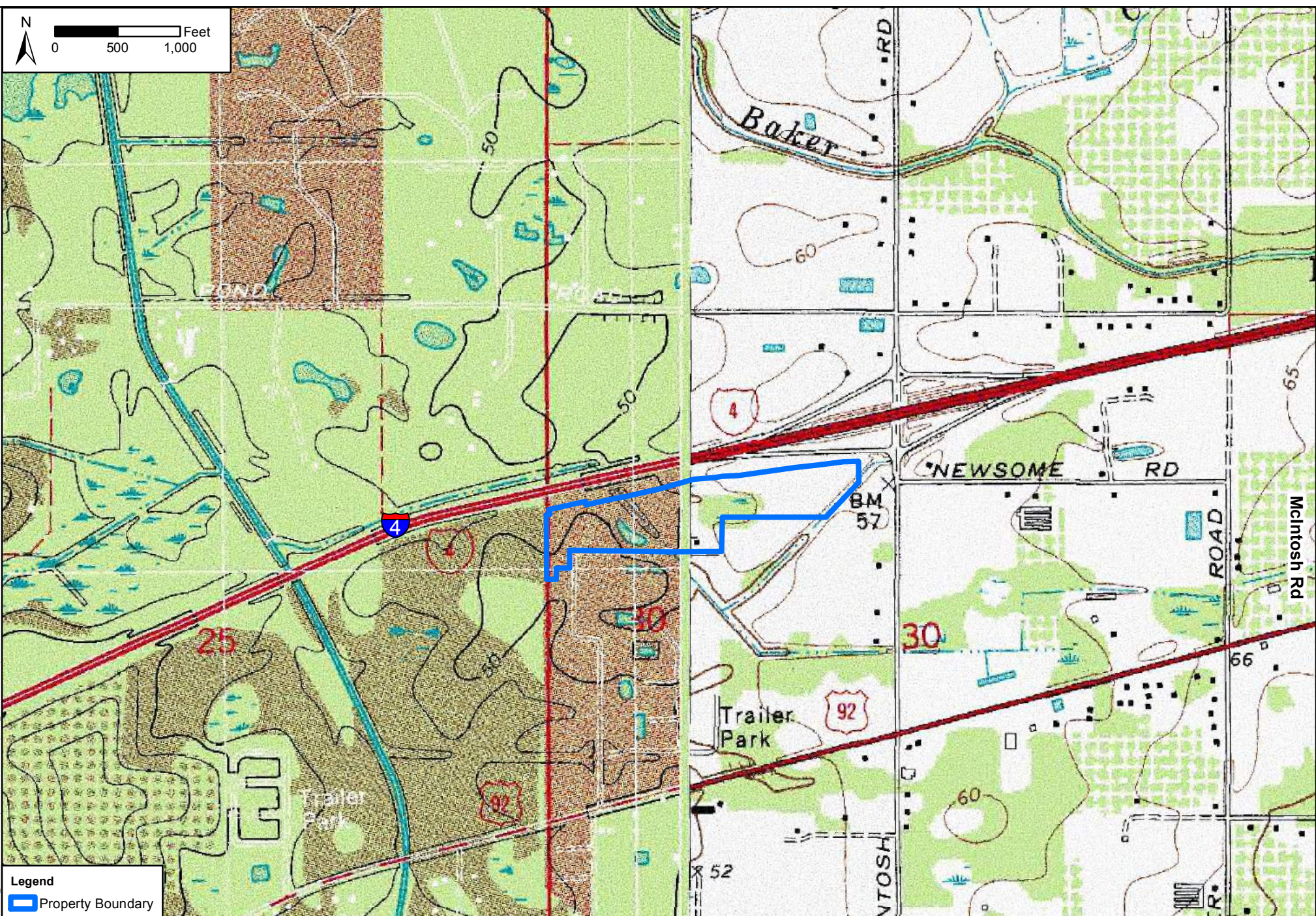
© 2016 Kimley-Horn and Associates, Inc.
 1615 S Congress Ave. St. 201
 Delray Beach, FL 33445
 Phone (561) 330-2345
 www.kimley-horn.com

Project Location Map
Tampa RV
Hillsborough County, Florida

1 in = 1,000 ft

OCTOBER 2016

FIGURE 1



Legend
 Property Boundary

Source: NRCS Data Gateway

Kimley & Horn
 © 2016 Kimley-Horn and Associates, Inc.
 1615 S Congress Ave., Suite 201, Delray Beach, FL 33445
 Phone (561) 330-2345
 www.kimley-horn.com

USGS Topographic Quadrangle Map
Tampa RV
Hillsborough County, Florida

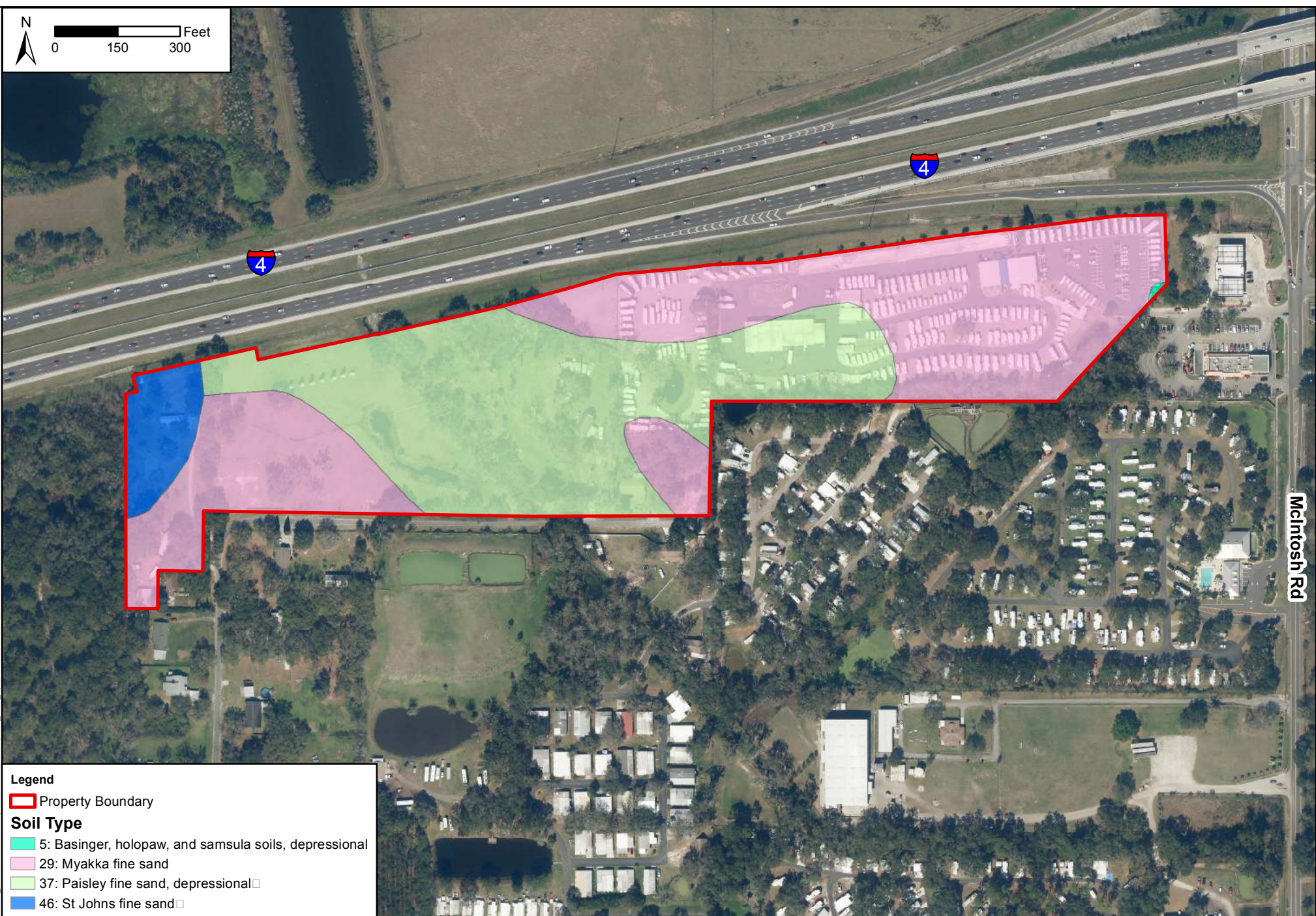
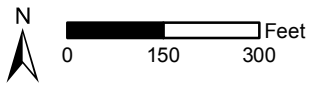
1 inch = 1,000 feet

OCTOBER 2016

JOB NUMBER: 149383007

FIGURE 2

K:\BGD_ENV\149383007-Tampa RV\GIS\MXD\TampaRV_TOPO_Landscape.mxd



Legend

Property Boundary

Soil Type

- 5: Basinger, holopaw, and samsula soils, depressional
- 29: Myakka fine sand
- 37: Paisley fine sand, depressional
- 46: St Johns fine sand

K:\BEGD_ENV\149383007-Tampa RV\GIS\MXD\Temp\RV_Soils_Updated02016.mxd

Source: NRCS Data Gateway

Kimley >>> Horn
 © 2016 Kimley-Horn and Associates, Inc.
 1615 S Congress Ave., Suite 201, Delray Beach, FL 33446
 Phone (561) 330-2345
 www.kimley-horn.com

NRCS Soils Map
Tampa RV
Hillsborough County, Florida

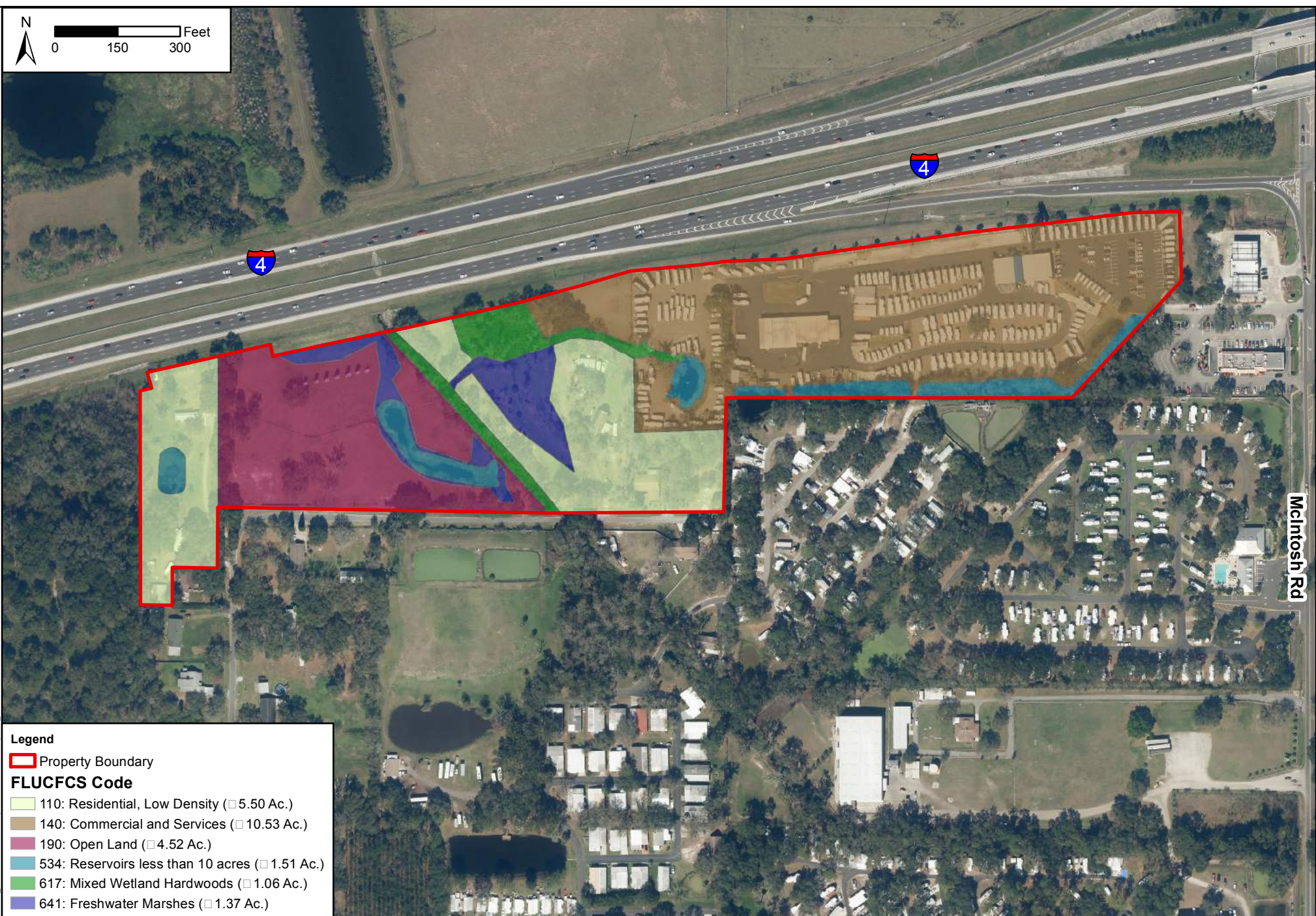
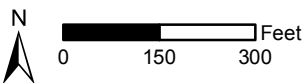
1 inch = 300 feet

OCTOBER 2016

JOB NUMBER: 149383007

FIGURE 3

Mcintosh Rd



Legend

Property Boundary

FLUCFCS Code

	110: Residential, Low Density (□ 5.50 Ac.)
	140: Commercial and Services (□ 10.53 Ac.)
	190: Open Land (□ 4.52 Ac.)
	534: Reservoirs less than 10 acres (□ 1.51 Ac.)
	617: Mixed Wetland Hardwoods (□ 1.06 Ac.)
	641: Freshwater Marshes (□ 1.37 Ac.)

Source: NRCS Data Gateway

Kimley & Horn

© 2016 Kimley-Horn and Associates, Inc.
 1615 S Congress Ave., Suite 201, Delray Beach, FL 33445
 Phone (561) 330-2345
 www.kimley-horn.com

Florida Land Use, Cover, and Forms Classification System

**Tampa RV
 Hillsborough County, Florida**

1 inch = 300 feet

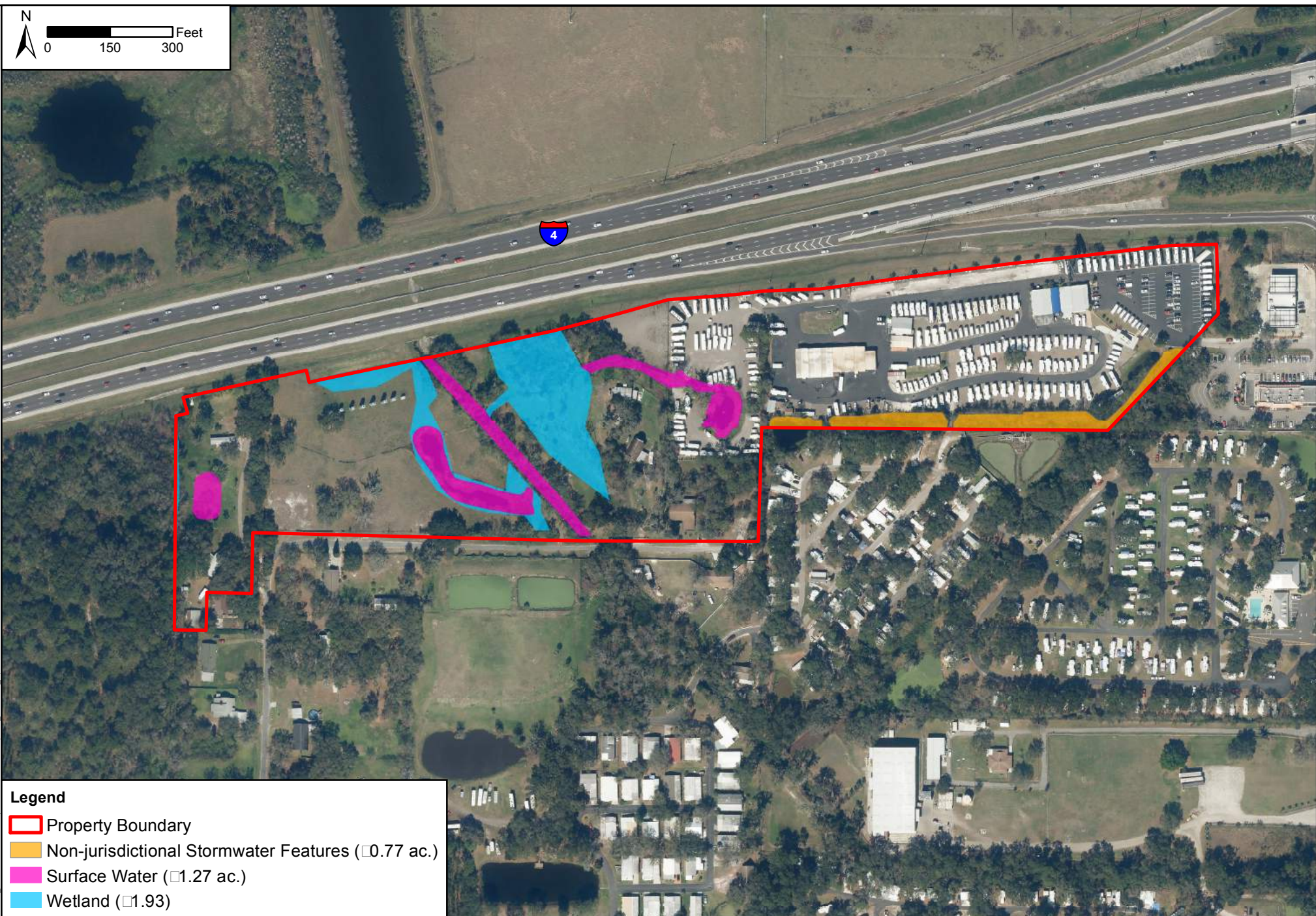
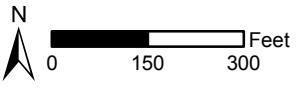
OCTOBER 2016

JOB NUMBER: 149383007

FIGURE 4

K:\BEGD_ENV\149383007-Tampa RV\GIS\MXD\TampaRV_FLUCFCS.mxd

McIntosh Rd



Legend

- Property Boundary
- Non-jurisdictional Stormwater Features (□0.77 ac.)
- Surface Water (□1.27 ac.)
- Wetland (□1.93)

Source: ESRI

K:\BGGD_ENV\149383007-Tampa RV\GIS\MXD\TampaRV_Wetlands_Updated.mxd

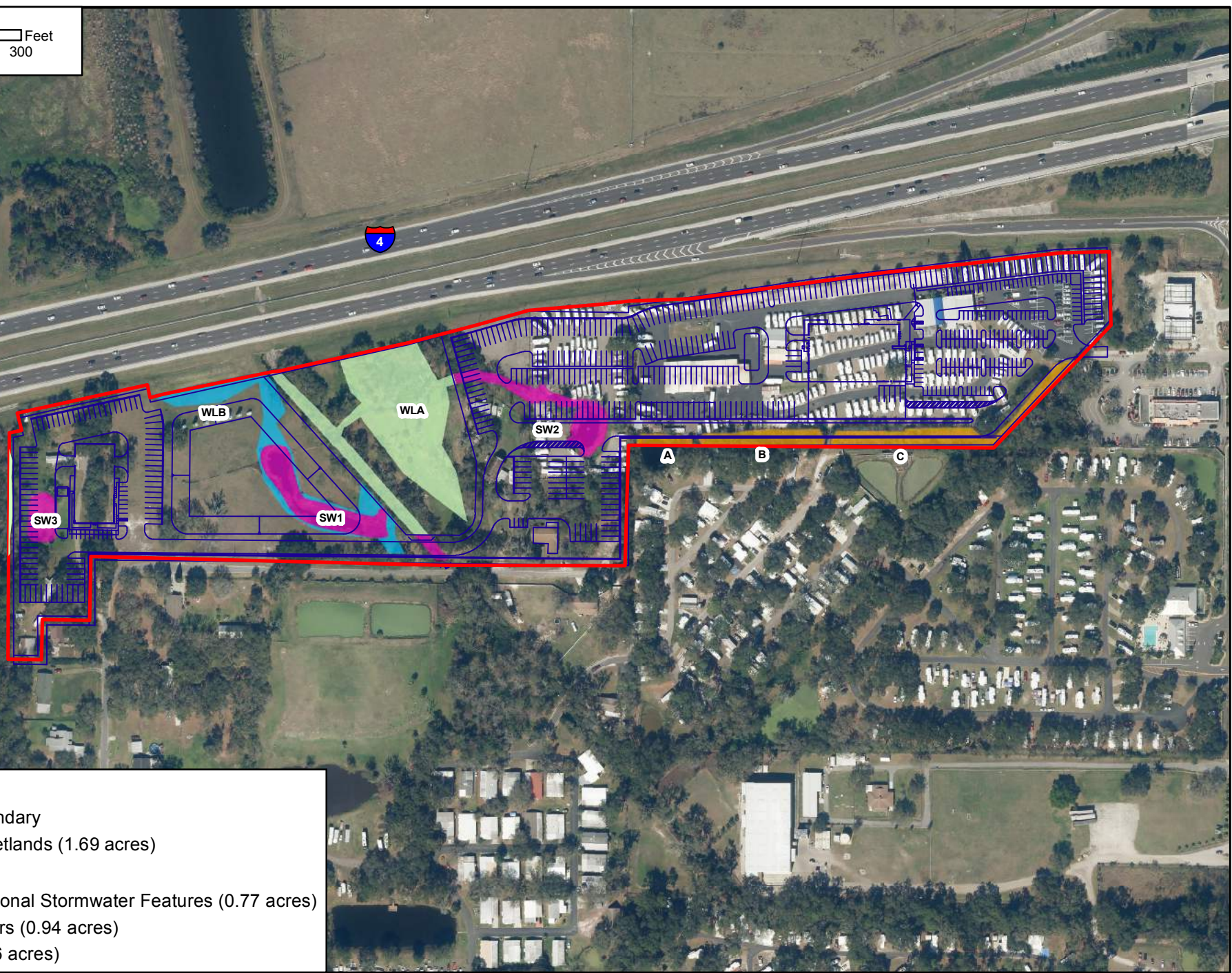
Kimley»Horn

© 2016 Kimley-Horn and Associates, Inc.
 1690 S Congress Ave # 100, Delray Beach, FL
 Phone (561) 330-2345
 www.kimley-horn.com

Wetlands and Surface Waters Map

Tampa RV
Hillsborough County, Florida

1 inch = 300 feet	OCTOBER 2016	JOB NUMBER: 149383007
		FIGURE 5



Legend

- Property Boundary
- Preserved Wetlands (1.69 acres)

Impacts

- Non-Jurisdictional Stormwater Features (0.77 acres)
- Surface Waters (0.94 acres)
- Wetland (0.56 acres)

K:\BGGD_ENV\149383007-Tampa RV\GIS\MXD\Wetland Impacts.mxd

Source: ESRI



© 2016 Kimley-Horn and Associates, Inc.
1690 S Congress Ave # 100, Delray Beach, FL
Phone (561) 330-2345
www.kimley-horn.com

Wetlands and Surface Waters Impacts Map

**Tampa RV
Hillsborough County, Florida**

1 inch = 300 feet

October 2016

JOB NUMBER: 149383007

FIGURE 6